

# IM29 SELECTRON



## TECHNICAL FEATURES:

automatic shot dosing,  
automatic boiler fill,  
built-in volumetric  
pump,  
2 stainless steel  
steam arms,  
automatic dosing  
hot water tap with  
hot water economizer,  
EDS.

Optional:  
computer interface,  
electric cup-warmer.

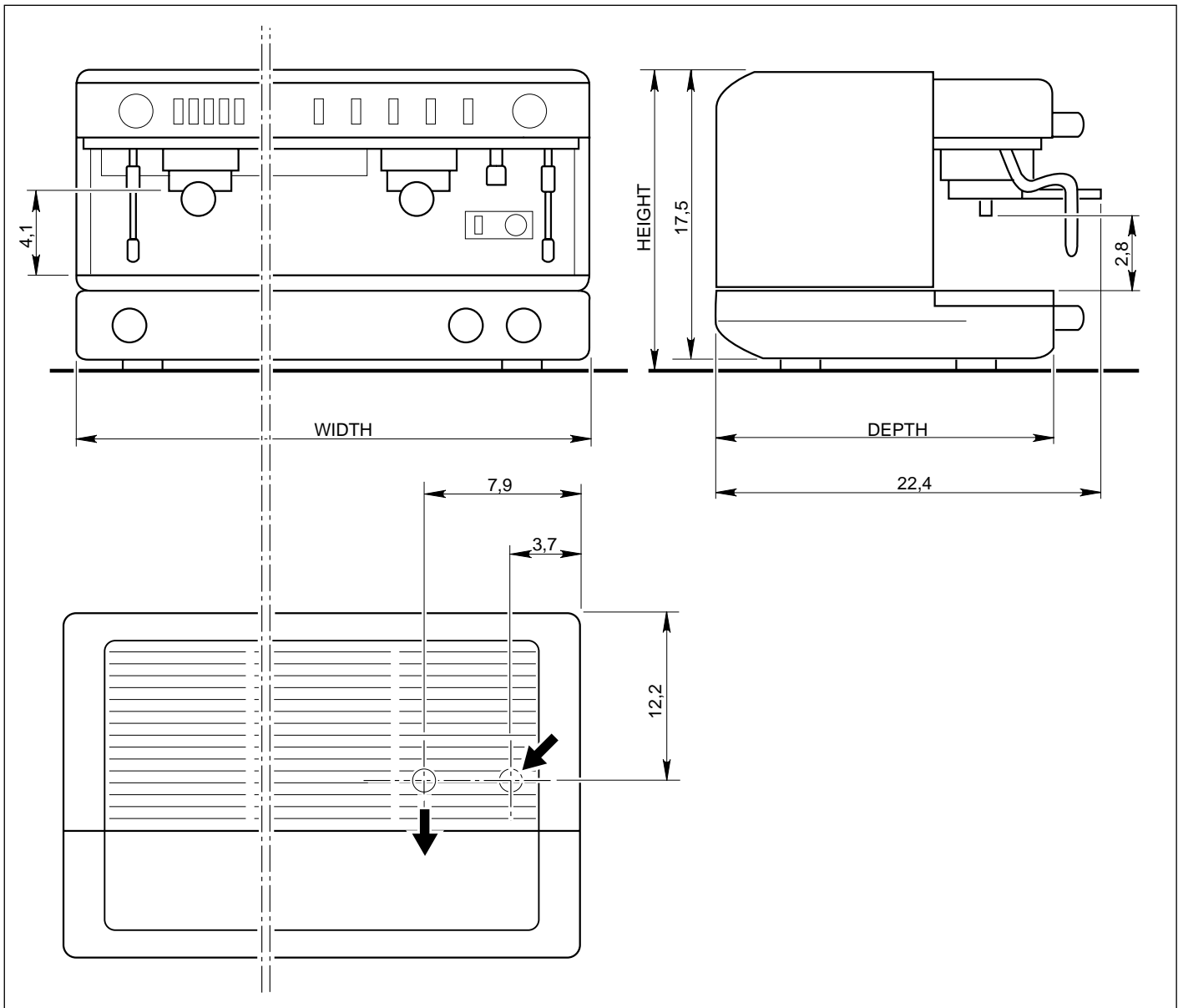
# LA CIMBALI

Since 1912 La Cimbali has been producing the world widest range of espresso coffee machines, from traditional to superautomatic models, in order to satisfy all its customers' needs. La Cimbali supplies a high quality pre- and after-the-sale service thanks to the high qualified job of its distributors, all trained at La Cimbali Training Centre in Italy, and all engaged in maintaining the most comprehensive consulting and training programs with their customers.

SERVINGS	
Portion size .....	Your figures .....
Selling price .....	.....
Less food cost .....	.....
Profit .....	.....
Multiply serving per day	X .....
Profit per day .....	.....
Multiply days open per year	X .....
Profit per year .....	.....

Please, use the above chart to check your own profit potential.

# M29 SELECTRON



Automatic shot dosing, automatic boiler fill, built-in volumetric pump,  
2 stainless steel steam arms, automatic dosing hot water tap with hot water economizer,  
EDS (Electronic Drying System).

Optional: computer interface, electric cup warmer.

Model	Voltage	Max Power	Amperage	Width	Height	Depth	Weight	Boiler capacity
M29 SELECTRON DT/2	208-240V	4200-5500W	30 Amps single-phase or three phase	30.3 inches	22.2 inches	20 inches	165 pounds	2.6 US gal.
M29 SELECTRON DT/3	208-240V	6050-8400W	40 Amps single-phase or three phase	38.2 inches	22.2 inches	20 inches	209 pounds	4 US gal.
M29 SELECTRON DT/4	208-240V	6050-8400W	40 Amps single-phase or three phase	46 inches	22.2 inches	20 inches	242 pounds	5.3 US gal.

**LA CIBALI**

Via A. Manzoni, 17 • 20082 BINASCO (MI) • ITALY • Tel.: +39 02 90 04 91 • Fax: +39 02 90 54 818 • Toll Free: 1-800-7 CIBALI  
www.cimbali.it • E-mail: cimbali@cimbali.it

*The manufacturer reserves the right to modify the appliances presented in this publication without notice.*